



spare parts  
availability  
guaranteed



# E1.2 Phono

## Plug & Play Entry Level Turntable

MSRP 399 € (incl. VAT)

Colour options:   

- **NEW** with quality switchable phono preamp
- **NEW** premium 730g aluminium die-cast platter
- **NEW** pre-adjusted Pick it MM E cartridge
- Glass fiber reinforced ABS sub platter
- Audiophile grade tonearm
- Damped DC motor
- Electronic speed change 33 / 45 RPM
- 8,6" tonearm with aluminium tube
- Belt drive under the platter
- High quality phono cables (1,23 m)
- Gold plated RCA sockets
- Dust cover included
- 25-years spare part availability guaranteed
- Handmade in Europe

**Speed:** 33, 45 (electronic speed change)  
**Wow & flutter:** 33: +/-0,23%; 45: +/-0,21%  
**Speed drift:** 33: +/-0,7%; 45: +/-0,6%  
**Signal to noise:** 65dB  
**Effective Tonearm length/mass:** 8,6" (218,5 mm) (7g)  
**Overhang:** 22,0mm  
**Platter bearing:** stainless steel axle in bronze bushing  
**Included accessories:** 15V DC / 0,8A power supply, dust cover, 7" single adapter  
**Power consumption:** 4,5W  
**Dimensions:** 420 x 112 x 330mm (WxHxD)  
**Weight:** 3,6 kg net

**E1.2 Phono Preamp:**  
**Input impedance:** 47kohms/100pF  
**RIAA-equalisation accuracy:** 20Hz-20kHz / +/- 0.5dB

## E1.2: A turntable for everyone

The E1.2 from Pro-Ject Audio Systems is the next generation E-Line turntable, aiming to deliver a great sound experience on a limited budget, **hand made in Europe**.

Our **Plug & Play design** with pre-adjusted tracking force and anti skating by our experienced technicians in the factory provides you the **best settings for your turntable**.



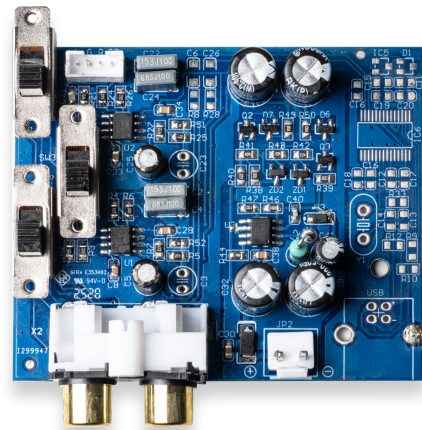
**High-quality switchable phono preamp designed to deliver clean, accurate signal amplification with gold-plated RCA output.**



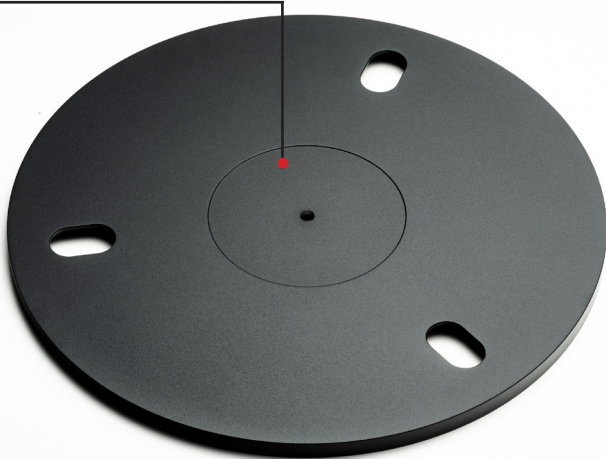
## True High-Quality Phono Preamp

Where most low-cost turntables rely on a very basic, single-chip phono stage, this design incorporates a true, high-quality phono preamp for **superior signal processing** and noticeably **improved sound performance**. Its advanced circuitry ensures **minimal noise and distortion**, preserving the richness and detail of vinyl playback.

Combined with gold-plated RCA outputs and a switchable phono preamp, it delivers flexibility and **premium audio quality** for both casual listeners and dedicated audiophiles.



Recessed area for record label



## NEW: Die-cast aluminium platter

We removed the ABS polymer main platter of the E1 and updated it with a **newly designed aluminium** one. The new **730g die-cast aluminium main platter** creates an ideal, **anti-resonant platform** for your vinyl. To guarantee perfect playback, the platter is **reworked and precision-balanced** in an extra step to obtain an evenly spinning platter.

This significant upgrade not only **improves rotational stability** but also enhances the overall acoustic performance by **minimizing unwanted vibrations and resonance**. The **additional mass** of the aluminium helps maintain consistent speed and provides a more solid foundation for the vinyl, allowing the stylus to track with **greater accuracy**.

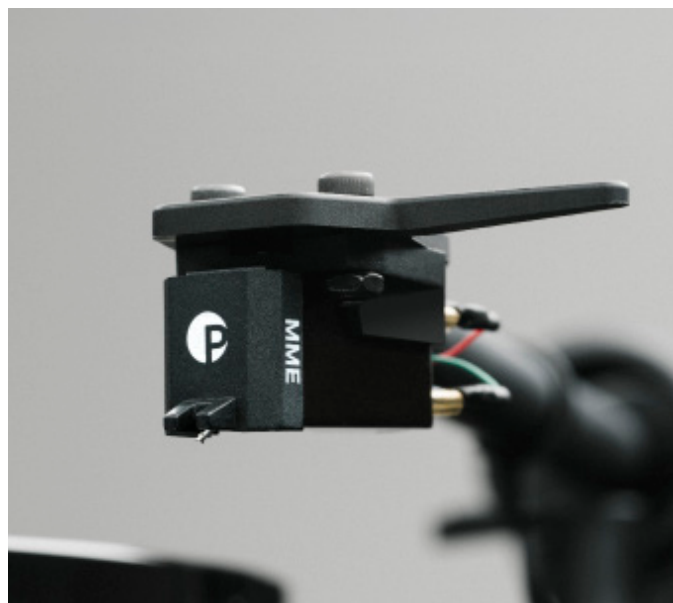
## NEW: Premium Pick it MM E

The phono cartridge is one of the most **sound-forming** and **sonically critical part** of a turntable. It transforms the physical grooves of a record into an electrical signal. This signal determines the base quality of the music playback.

The Pick it MM E uses a **low mass system** which is realized with a **miniature neodymium generator magnet**. Due to the **lower inertia** the result is a **clear improvement of tracking accuracy**.

The **conical diamond tip** delivers a **warm and smooth** high quality audio reproduction with **low background noise**.

The **highly damped ABS body** effectively **reduces vibration** induced colorations to a vanishing level.



### Precision tonearm

The tonearm of the E1.2 is crafted to deliver **exceptional performance right out of the box, expertly adjusted** at the factory, so you're **ready to play right away**. No tools, no guesswork - **plug in and press play**.

At its core is a **heavy mass gimbal design**, offering solid tracking and **great sound stability**. The **precision bearing system with zero play** means **smooth movement** and clean sound.

We've added a **carbon-reinforced, super stiff headshell** to reduce vibrations. The oversized diameter counterweight is placed closer to the moving parts, **improving balance and tracking** for better detail and bass response.

### Precision pinpoint bearing



## Precision Craftsmanship

The plinth is the foundation of great vinyl playback—and we've gone the extra mile to get it right. **CNC-machined** from a rigid composite fiber, the chassis is carefully engineered with **no hollow spaces** inside. This **solid, resonance-resistant** construction helps **eliminate unwanted vibrations**, allowing your music to come through with **clarity and energy**.

Available in high-gloss black, satin white, or walnut finish, the plinth doesn't just sound good, it also looks stunning in any setup. Its clean lines and premium surfaces reflect the **quality typically found in higher-end models**, making it a beautiful centerpiece for your living room.



### No hollow spaces

No space for unwanted resonances and vibrations



### Damping feet

Decouple the turntable & provide a solid stand



### 33 / 45 RPM

Change speeds with the push of only a single button



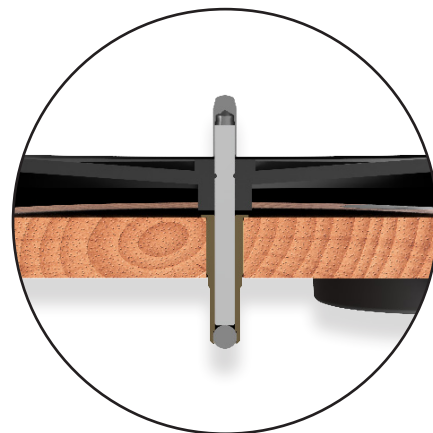
### High quality cable

OFC copper cable with gold plated RCA connectors



### Precision sub platter

Glass fiber reinforced 0,001% precision ABS sub platter



### Premium main bearing

stainless steel axle and ball in bronze bushing