

EXPANSE



by Dan Clark Audio

"Expand Your Soundstage"

Introducing EXPANSE, Dan Clark Audio's Open-Back Headphone

Our flagship EXPANSE sets a new standard in open-back headphone musicality, soundstage, and comfort. Featuring Dan Clark Audio's all-new 4th generation planar magnetic driver and breakthrough Acoustic Metamaterial Tuning System, EXPANSE delivers a stunningly smooth presentation to bring new depth and breadth to all your favorite music.

And we didn't stop at improving the soundstage and detail; we also redesigned our headband to deliver a big step up in both ergonomics and comfort!



Acoustic Metamaterial Tuning System (AMTS)

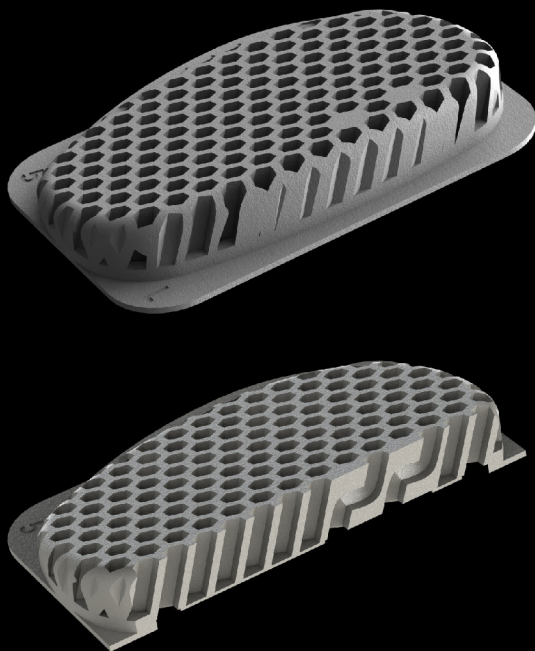
All headphones are subject to standing waves in the higher frequencies, and these can make treble sound harsh, fatiguing, or synthetic.

AMTS is DCA's patent-pending solution to this perennial problem. AMTS is an inline device placed between the transducer and ear. It integrates waveguides, diffusion control, quarter-wave, and Helmholtz resonators into one compact structure.

Diffusion elements reduce some standing wave formation while resonators act as both precision and broad filters to smooth and shape the frequency response, reducing the amplitude of response peaks and troughs

from the midrange through the highest frequencies.

The upshot is AMTS greatly reduces standing waves so high frequencies are rendered with a refreshingly smooth, accurate, and detailed delivery across all genres. OK, bad recordings are still bad, we're not magicians!



EXPANSE's 4th generation planar-magnetic driver delivers the smoothest, richest, and most detailed experience we could create. The EXPANSE driver is 20% larger than the E2 driver and uses our patented v-Planar technology to reduce THD and improve low frequency extension.

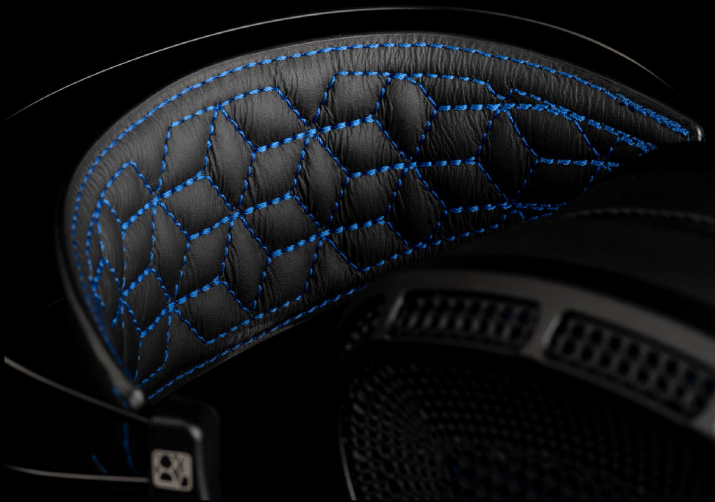


But we didn't stop there! Diaphragm tension is set on an all-new system for a more uniform and consistent tension, lower distortion, and better driver matching, while FEA and CFD optimized motor structures increase driver force uniformity and smooth acoustic paths to reduce distortion.

Expanses Redefines "Detail"

EXPANSE's planar driver delivers incredibly low distortion throughout the listening range with levels of detail heretofore found primarily in the top-of-the-line electrostatics. Unlike many headphones where "detail" is created through exaggerated high-frequency energy, EXPANSE's AMTS delivers industry-leading resolution free from the fatiguing emphasis on the top register users may be used to.

Together, our 4th-generation motor and AMTS deliver a sonic performance best described as "effortless." From a delicately plucked string to the most intense dynamics of an orchestra, or the weight and attack of a kick drum to the overtones a decay of a crash cymbal, EXPANSE delivers an amazing balance of delicacy, nuance, and slam that will have you reaching for all your favorite recordings, and maybe staying up a bit too late.



And then there's the soundstage; EXPANSE is so all enveloping sonically we believe to date it is the finest open back headphone available on the planet. Expanses not only throws an enormous soundstage but it also renders instruments and voices with a sense of physical size and presence that makes for a more lifelike feel than headphones with soundstage normally convey.

Expanse Mechanical Design Innovations

"We set out to make EXPANSE a real design statement," said Dan Clark, Founder and CEO. "Made of stylish matte-black leather, and machined aluminum, EXPANSE design takes its cues from aircraft design and is finished to levels you'd expect in the finest of luxury cars."

The top grade black leather headband features fine blue stitching to create a quilted head-strap that's not only gorgeous but is also functional and comfortable. The elegant embroidered EXPANSE logo adds a dash of color to EXPANSE's all-black aesthetic.

Gone are the mechanical sliders for fit adjustment; we've designed a stable yet comfortable "self-adjusting suspension system" that seats the headphone just right, with no muss or fuss.

Dan Clark Audio makes some of the lightest headphones in the world and EXPANSE is no exception; at just 418g it's one of the lightest super-premium headphones on the market. Together our new vegan suede and "leather" ear pads, self-adjusting suspension, and lightweight chassis make EXPANSE so comfy you can just ignore it and "vanish into your music." If it's not comfortable, game over.

Dan Clark Audio makes some of the lightest headphones in the world and EXPANSE is no exception; at just 418g it's one of the lightest super-premium headphones on the market. Together our new vegan suede and "leather" ear pads, self-adjusting suspension, and lightweight chassis make EXPANSE so comfy you can just ignore it and "vanish into your music." If it's not comfortable, game over. Dan has often said if the headphone is not physically comfortable enough to wear for extended listening sessions then the design is flawed. That's why comfort is a top priority, and that's why Dan Clark Audio has produced some of the lightest and most comfortable headphones in the industry, from the ultralight 280g Ether 2 to the ground breaking ergonomics of the Aeon series. The ergonomic and stylish outline of EXPANSE's ear cups is a natural extension of Aeon 2 ergonomics, albeit they are larger. For storage or travel we incorporated Aeon 2's elegant folding gimbal structure into EXPANSE, neatly folding it into a compact custom molded case that's small and easy to stow.



EXPANSE Key Features and Benefits

- Patent-pending Acoustic Metamaterial Tuning System (AMTS) delivers unprecedented high-frequency detail and clarity for the ultimate in smoothness, tone, and detail retrieval
- 4th generation v-Planar driver with our largest planar diaphragm to date, delivering exceptional dynamics with vanishingly low distortion for a natural and “easy” listen
- Improved driver tensioning system creates a driver with incredible consistency across units
- FEA and CFD optimized motor structure increases driver motor-force uniformity and smooths acoustic flow
- All-new auto-adjusting suspended strap design makes EXPANSE hassle-free to wear
- Pre-formed ergonomic strap design spreads weight evenly across the head for incredibly comfortable extended listening
- Strap quilting improves comfort and reduces heat buildup
- Composite synthetic suede and protein-leather pads offer a snug fit with minimal clamp, with a pleasant touch on the skin
- The grill topology is computer generated to reduce Acoustic reflections, and minimize weight
- Folding gimbals allow EXPANSE to be packed in a compact case for safe and easy transport
- Uncompromising industrial design uses aluminum, and titanium to maximize strength while _minimizing weight, in a stylish package.
- EXPANSE is designed and built by hand in San Diego, California, and is backed by quality and support you can count on

EXPANSE, The Evolution of Dan Clark Audio Design

Dan Clark Audio’s design goal is to never compromise on sound, comfort, or aesthetics. EXPANSE is our ultimate statement and embodies everything we’ve learned since our inception.

We hope you enjoy it, and invite you to take a listen to the all new EXPANSE, and vanish into the music!

