

www.audiophysic.de

NEWS 2009/10 CARDEAS



[audiophysic]

No loss of fine detail

Walnut

[CARDEAS]

CARDEAS: In Greek and Roman mythology, Cardea was the goddess of health, thresholds and door hinges and handles, also associated with the wind. She protected children against vampires and witches, and was also the benefactress of craftsmen.

Cardea means "Goddess of Protecting the children and the home". Ovid said of Cardea, in what is apparently a religious formula, "Her power is to open what is shut; to shut what is open."

CARDEAS: Cardeas waren in der griechischen und römischen Religion die Göttinnen der Gesundheit, der Schwellen, der Türscharniere und der Türgriffe, überhaupt des Hauses als Heim einer Familie, sie schützten Kinder gegen Vampire und Hexen und waren auch die Schutzherrin der Handwerker.

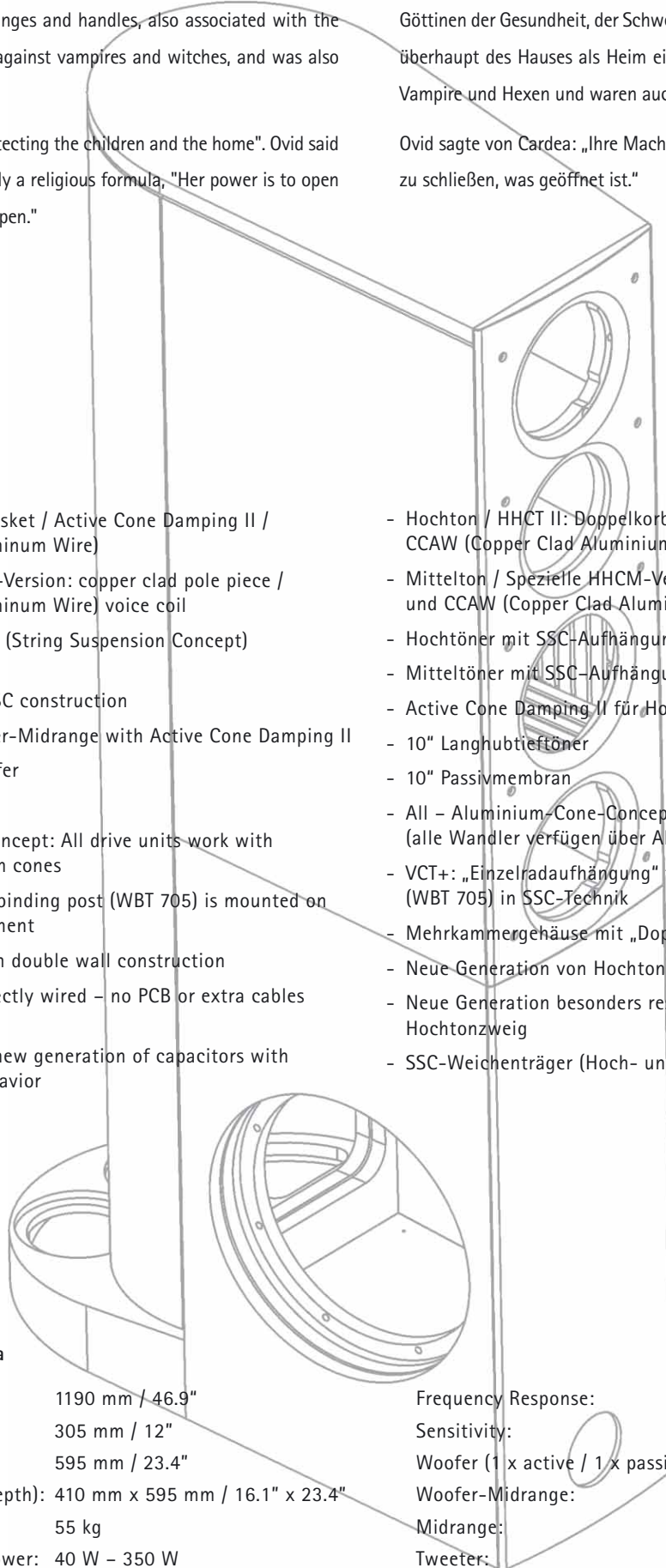
Ovid sagte von Cardea: „Ihre Macht ist es, zu öffnen, was geschlossen ist; zu schließen, was geöffnet ist.“

Features

- Tweeter/HHCT II: Dual basket / Active Cone Damping II / CCAW (Copper Clad Aluminum Wire)
- Midrange/Special HHCM-Version: copper clad pole piece / CCAW (Copper Clad Aluminum Wire) voice coil
- Tweeter mounted on SSC (String Suspension Concept) construction
- Midrange mounted on SSC construction
- Tweeter/Midrange/Woofer-Midrange with Active Cone Damping II
- 10" Long-stroke Subwoofer
- 10" Passivradiator
- All – Aluminium-Cone-Concept: All drive units work with ceramic coated aluminum cones
- VCT+: Each high quality binding post (WBT 705) is mounted on its independent SSC-element
- Multi-chamber cabinet in double wall construction
- Tweeter cross over is directly wired – no PCB or extra cables involved
- Tweeter cross over uses new generation of capacitors with optimized resonance behavior
- Hochtöner / HHCT II: Doppelkorb / Active Cone Damping II / CCAW (Copper Clad Aluminium Wire)
- Mittelton / Spezielle HHCM-Version mit verkupferten Polkern und CCAW (Copper Clad Aluminium Wire)
- Hochtöner mit SSC-Aufhängung
- Mitteltöner mit SSC-Aufhängung
- Active Cone Damping II für Hoch- Mittel- und Tiefmitteltöner
- 10" Langhubtieftöner
- 10" Passivmembran
- All – Aluminium-Cone-Concept (alle Wandler verfügen über Aluminium-Konusmembranen)
- VCT+: „Einzelradaufhängung“ für die Anschlussklemmen (WBT 705) in SSC-Technik
- Mehrkammergehäuse mit „Doppelverglasungseffekt“
- Neue Generation von Hochtönerweichen in Direktverdrahtung
- Neue Generation besonders resonanzarmer Kondensatoren im Hochtönerzweig
- SSC-Weichenträger (Hoch- und Mittelton)

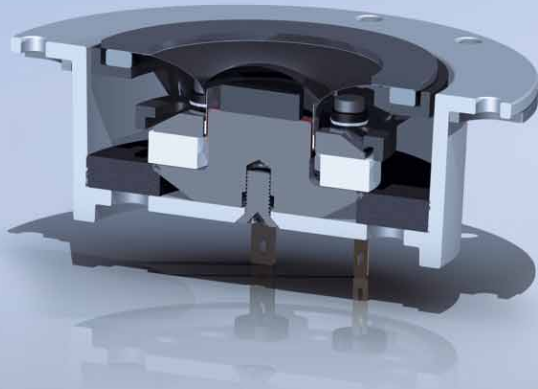
Preliminary Technical Data

Height:	1190 mm / 46.9"	Frequency Response:	25 Hz – 40 kHz
Width:	305 mm / 12"	Sensitivity:	89 dB
Depth:	595 mm / 23.4"	Woofer (1 x active / 1 x passive):	260 mm / 10"
Required space (Width x Depth):	410 mm x 595 mm / 16.1" x 23.4"	Woofer-Midrange:	2 x 150 mm / 5.9" HHCM
Weight:	55 kg	Midrange:	1 x 150 mm / 5.9" HHCM
Recommended Amplifier Power:	40 W – 350 W	Tweeter:	1 x 39 mm / 1 3/4" HHCT II

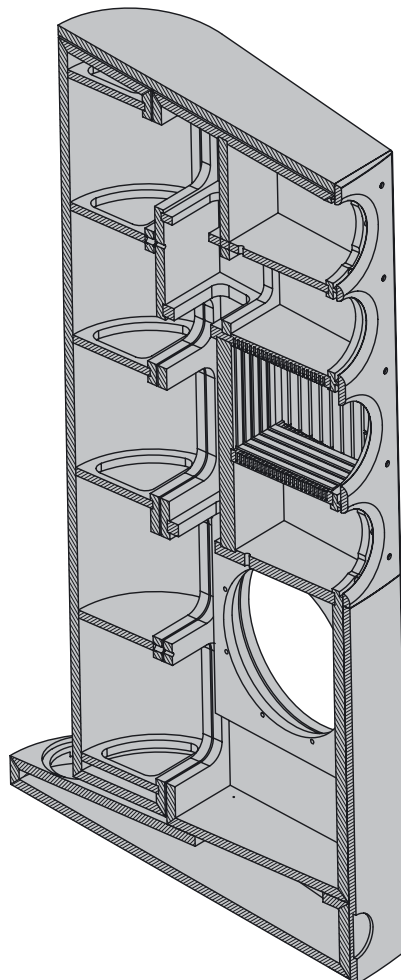


[HHCT II]

[HHCT II: The second generation of the
HYPER HOLOGRAPHIC CONE TWEETER



- Low resonance, dual basket construction
- Aluminium Cone with Active Cone Damping II
- Voice coil with CCAW (Copper Clad Aluminium Wire)
- Highly efficient, neodymium magnet



[audio physic program]

[YARA LINE]

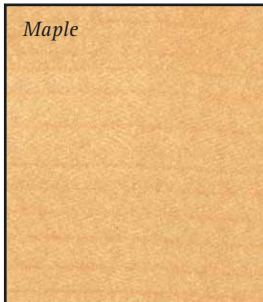
[HIGH END]

[REFERENCE]

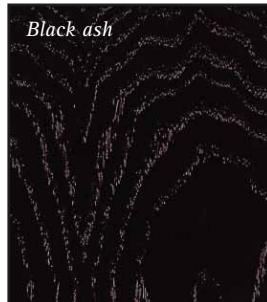
	YARA II Compact	YARA II Center	YARA II Sub	YARA II Evolution	YARA II Classic	YARA II Superior	SITARA	TEMPO	SCORPIO	RHEA	VIRGO	AVANTI	CARDEAS	KRONOS	STEP	CELSIUS	HIGH END CENTER	REFERENCE CENTER	SKY-HIGH On-Wall	SKY-HIGH In-Wall
Height:	310 mm / 12.2"	150 mm / 5.9"	385 mm / 15.2"	950 mm / 38"	995 mm / 39.2"	1000 mm / 39.4"	980 mm / 38.6"	1000 mm / 39.4"	1100 mm / 43.3"	405 mm / 16"	990 mm / 39"	1110 mm / 43.7"	1190 mm / 46.9"	1300 mm / 51.2"	320 mm / 12.6"	145 mm / 5.7"	290 mm / 11.4"	290 mm / 11.4"	295 mm / 11.6"	285 mm / 11.2"
Width:	150 mm / 5.9"	450 mm / 17.7"	320 mm / 12.6"	170 mm / 6.8"	150 mm / 5.9"	150 mm / 5.9"	147 mm / 5.8"	187 mm / 7.4"	214 mm / 8.5"	415 mm / 16.3"	230 mm / 9.1"	240 mm / 9.4"	305 mm / 12"	360 mm / 14.2"	175 mm / 6.9"	487 mm / 19.2"	634 mm / 24.9"	634 mm / 24.9"	310 mm / 12.2"	200 mm / 7.8"
Depth:	200 mm / 7.9"	200 mm / 7.9"	320 mm / 12.6"	230 mm / 9.1"	200 mm / 7.9"	320 mm / 12.6"	220 mm / 8.7"	320 mm / 12.6"	390 mm / 15.4"	510 mm / 20"	400 mm / 15.7"	420 mm / 16.5"	595 mm / 23.4"	600 mm / 23.6"	250 mm / 9.8"	300 mm / 11.8"	340 mm / 13.3"	360 mm / 14.1"	130 mm / 5.1"	90 mm / 3.5"
Required space (Width x Depth)	-	-	340 mm x 340 mm 13.4" x 13.4"	-	190 mm x 270 mm 7.5" x 10.6"	190 mm x 390 mm 7.5" x 15.4"	290 mm x 330 mm 11.4" x 13.0"	290 mm x 430 mm 11.4" x 16.9"	290 mm x 530 mm 11.4" x 20.9"	415 mm x 510 mm 16.3" x 20"	330 mm x 470 mm 13" x 18.5"	330 mm x 500 mm 13.0" x 19.7"	410 mm x 595 mm 16.1" x 23.4"	500 mm x 750 mm 19.7" x 29.5"	175 mm x 300 mm 6.9" x 11.8"	490 mm x 330 mm 19.3" x 13.0"	-	-	-	-
Weight:	4.6 kg	6.5 kg	16 kg	13 kg	13 kg	19 kg	17 kg	20 kg	27 kg	40 kg	27 kg	40 kg	55 kg	120 kg	5.5 kg	9 kg	18 kg	18 kg	5 kg	3 kg

[Veneers]

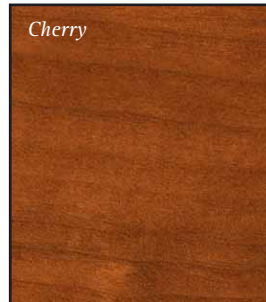
[Special finishes]



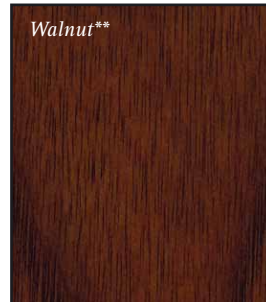
Maple



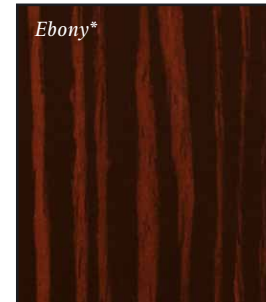
Black ash



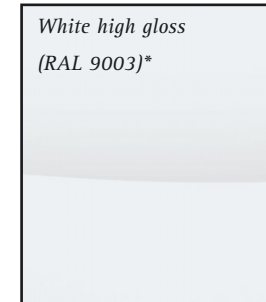
Cherry



Walnut**



Ebony*



White high gloss
(RAL 9003)*



Black high gloss
(RAL 9017)*

It is the fine veneer finish that makes a loudspeaker unique. Texture and wood grain gives each one its own unique look.

* On request / ** 4th quarter 2009



Audio Physic GmbH

Almerfeldweg 38 - 59929 Brilon - Germany

No loss of fine detail

Tel. +49 (0) 29 61-96 170 - Fax +49 (0) 29 61-51 64 0

info@audiophysic.de - www.audiophysic.de